

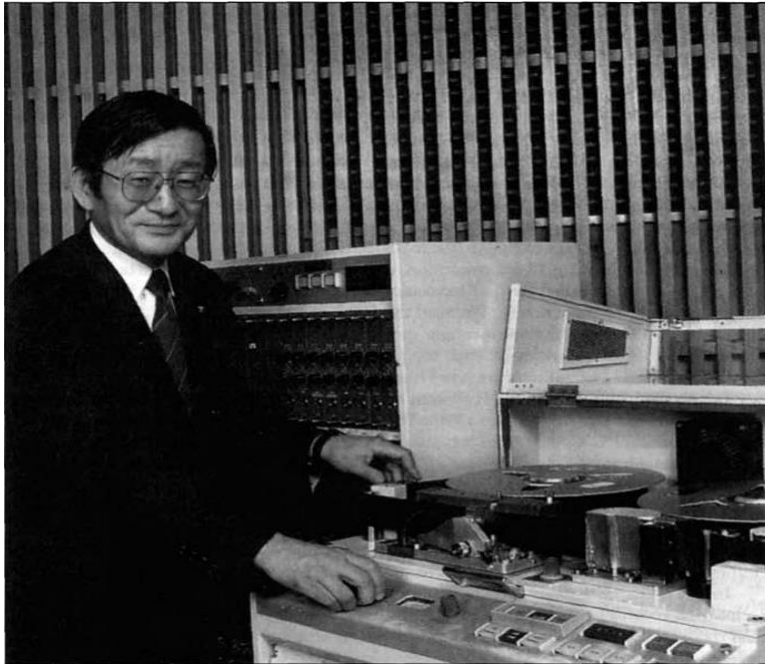
DAT

Digital Audio Tape



Nasjonalbiblioteket
Lydlaboratoriet

PCM



WATCH WHATEVER WHENEVER.

With Sony's Betamax SL-8600 video recorder, you can see any TV show you want to see anytime you want to see it.

Because Betamax, which plugs into any TV set and is easy to operate, can videotape a show up to three-hours long (with the L-750 videocassette) while you're doing something else—even while you're out of the house, by setting the electronic timer.

It can also videotape something off one channel while you're watching another channel.

And remember, Sony has more experience in videorecorders than anyone (over 20 years!). In fact, we've sold more videorecorders to broadcasters and industry than any other consumer manufacturer. We even make our own tape.

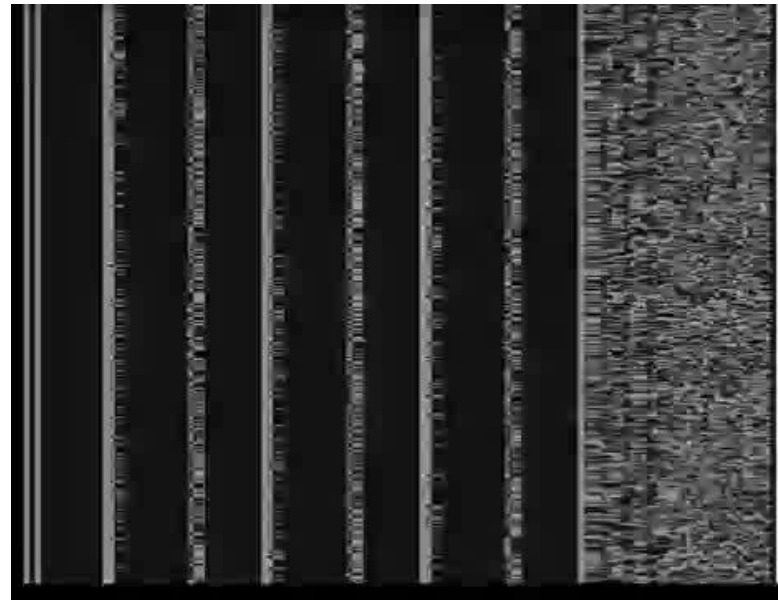
For years you've watched TV shows at the times you've had to. Now you can watch them at the times you want to.



SONY BETAMAX
THE LEADER IN VIDEO RECORDING

© 1975 Sony Corp. of America. SONY and Betamax are registered trademarks of Sony Corp.

Pseudovideo 1967-1986



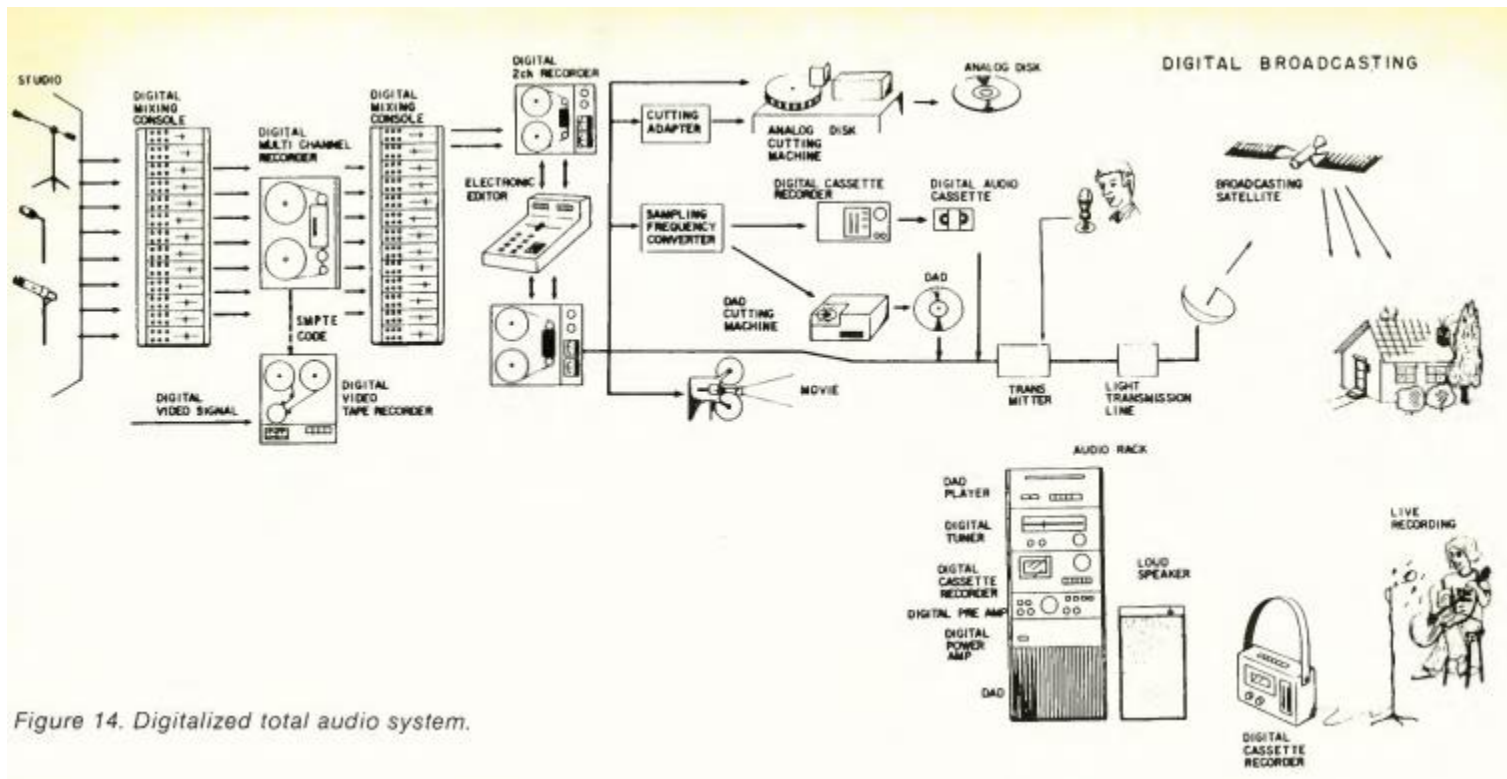


Figure 14. Digitalized total audio system.

Here comes DAT

Aftenposten Mandag 22. februar 1988



Nå er den digitale kassettbåndspilleren, DAT, å få i Norge. Sony lanserer sin DTC 1000 til en pris av ca. 19 990 kroner.



nes stue. Det er bare en nake ved produktet. Det er så godt at det kan føre til en ny handelskrig med Japans europeiske og amerikanske konkurrenter.

Ekebergnaalen vil publikum selv få anledning til å ta opp musikk

– Det er ikke billig, men prisene vil nok gå noe ned etter

DAT finner seg selv

**APPROXIMATE PRICE
£300,000 PLUS**

"The Ultimate 48 Track System"

A state-of-the-art, no-holds-barred digital set-up, configured with only the top studios in mind.

Equipment includes:

Amek G2520 56/48 track mixing console

Two Sony PCM 3324 digital multi-track recorders

Sony PCM 1630/DMR 2000 Compact Disc Mastering

Sony PCM 2500 or Sony DTC 1000ES (pictured) DAT Digital Mastering

A selection of high quality outboard gear from AMS, Drawmer and many more.

Packages like this are regularly devised, installed and maintained by HHB's experienced team of engineering professionals.



[NRK RADIO HISTORISK: 98-0-02011]

FUJI

124P

1245720_0001_1

Archivists Warn: Don't Depend on Digital Tape

By Frank Beacham

New York: A group of the world's leading audio preservationists have warned that tape-based digital recording media – especially DAT – is not reliable for long term archiving.

During a panel discussion at AES '95, the archivists issued an urgent plea to recording equipment manufacturers to quickly create reliable long-term storage media for analog and digital audio recordings. There was a consensus that, at least for now, analog tape is the only proven, reliable way to preserve sound recordings for the future.

fatning er
at de kan
ogien
ennom på

tas i bruk
(Digital Audio Tape)
markedet.

Professional Use

NRKH10

NRKH10040

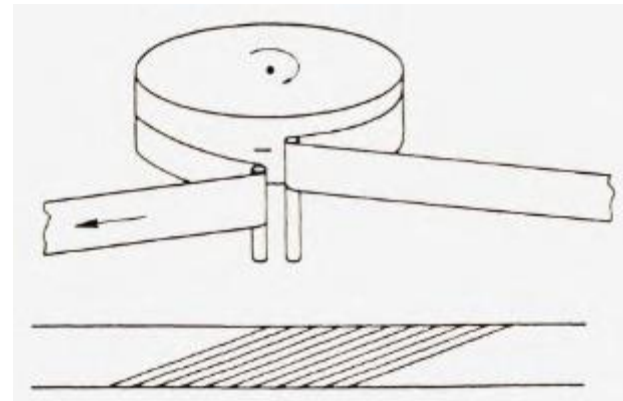
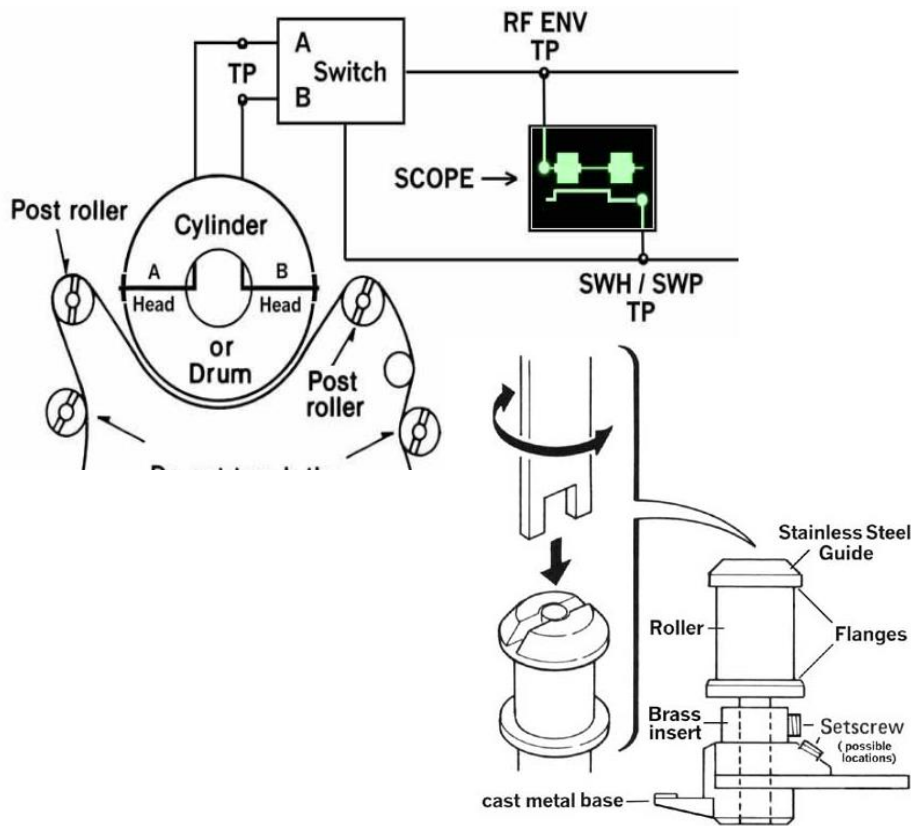
NRKH10040888

ONALT
LYDARKIV
Utredning
Statens Datasentral a.s

Oslo, oktober 1989

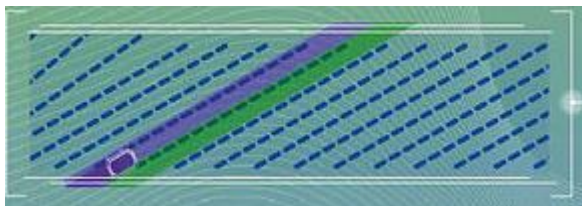
UTFORDRINGER

- Feil på opptakets sporvinkel



- Fysisk degenerasjon

DAT tape is recorded on Mylar tape, which deforms slightly over time. After 10 or 15 years, the track of information on the tape is no longer straight. Because the track is as narrow as a human hair, any deformation makes the playback head miss some packets of information. If too much information is missed, then the error correction is ineffective, and the data stream is muted. Audio dropouts occur.

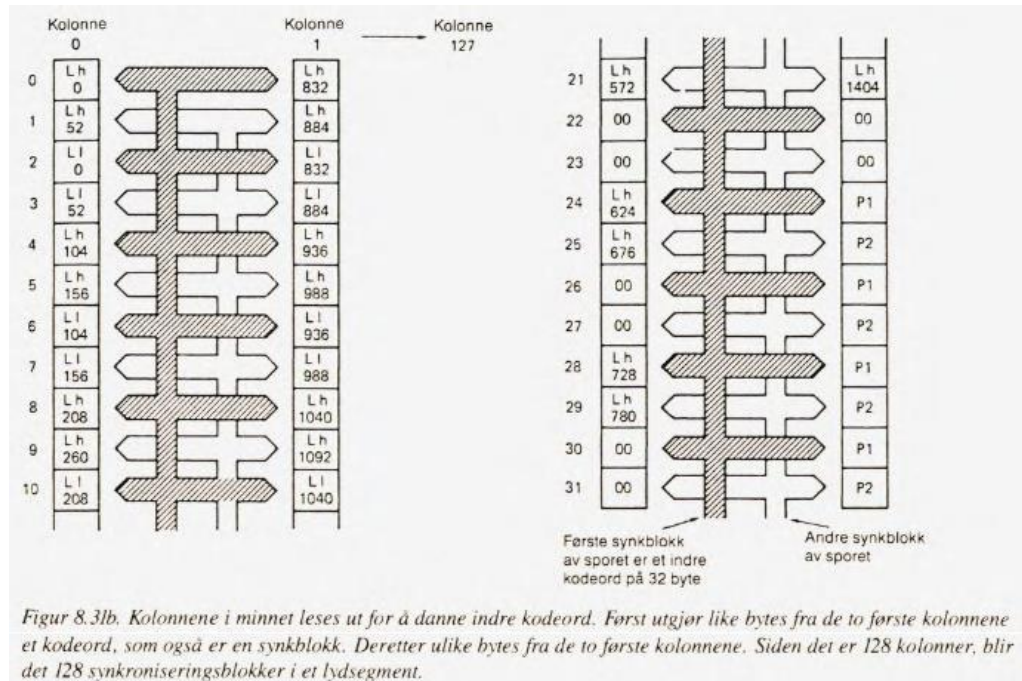


- Dropp



- PCM lesefeil



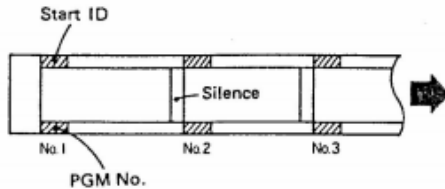


- Stokking og Reed Solomon
- Sample hold
- Sample interpolation
- Sample mute

ID tags

AUTO ID: In this mode, a Start ID and Program Number will be automatically recorded at each occurrence of audio levels exceeding -54 dB or user-selected decibels (discussed below) after a lapse of about 3-second lower levels or silence.

- Press the AUTO ID key, and check to see "AUTO ID" lights in the display.



Note that a quiet passage ("pianissimo") might cause the beginning of the next passage to be indexed and numbered as if it were a new program. Don't worry. You can correct it (with "Start Erase") later.

Suggestion: The sensitivity level of the AUTO ID circuit defaults to -54 dB but can be set to -60, -66, -72 or -48 dB. If you want to change the sensitivity level, hold SHIFT and press AUTO ID until the desired level shows when the DA-30 MKII is stationary (in STOP, PLAY-PAUSE or STANDBY mode), or while it is playing. Don't use -72 dB but for digital recording.

CAUTION: Use AUTO ID from the beginning of tape. If you use the function from an intermediate point, Start IDs are recorded but not Program Numbers (unless the previous PNO is read).

2. EDITING START IDs, SKIP IDs, AND PROGRAM NUMBERS

NOTE: Before anything else, check to see the write prohibit tab and hole on the cassette are NOT open.

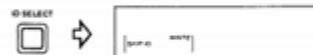
1. INDEX EDITING

2-1. Positioning Start and Skip IDs

Both the start and skip indexes can be placed with 5 frame (150 millisecond) accuracy using the POSITION feature.

Preliminary Notes:

- POSITION cannot "move" a START or SKIP ID already marked in the subcode. You must first erase the ID mark and use POSITION to write a new mark. If you press POSITION too close to an existing ID mark, the deck will go to STOP (in step 3 below).
 - POSITION relies on Absolute Time (ABS) data recorded on the tape. You can't "position" any point where ABS data is not previously recorded.
 - When Start/Skip Indexes are actually recording in POSITION mode, all transport controls are locked out except for STOP.
3. In PLAY mode, press the ID SELECT button repeatedly until "START ID WRITE" (or "SKIP ID WRITE") appears in the display window.



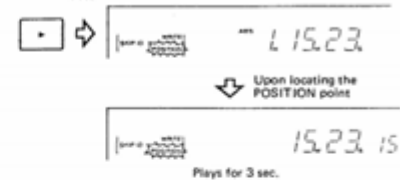
- As you hear the appropriate point, press POSITION.

- The absolute time of that point will be read out in the time counter window and "POSITION" will blink while the deck will go to pause mode.



- To audition your original cue point, press PLAY. The tape will rewind back to the point where the POSITION button was pressed, during which the absolute time display will decrement. You will hear the approximate starting point of the cue, and then the deck will go back into PAUSE mode. You can audition the cue point as often as you wish.

NOTE: Due to transport ballistics, the actual play starting point will shift slightly depending on whether the deck is started from a STANDBY / PAUSE mode, or DIRECT SEARCH/PLAY mode. If start times are critical for your application, you will need to experiment with different "frame settings" depending on which search/play you will use.



- To change the edit point in either direction, trim the absolute time display by pressing FWD and REW or with the DATA wheel. Each time the button is pressed or as you rotate the wheel, the display will increment/decrement in steps of 5 frames (150 milliseconds), up to a limit of 50 frames ahead or behind the original POSITION.



- Audition the new cue point by pressing PLAY. Repeat steps 3 and 4 until you are sure that the POSITION point is correct.

- To actually write the chosen point, press the EXECUTE button to begin indexing.



IMPORTANT: After Start ID references have been added, RENUMBER can be used to add the correct PGM number to each Start ID on the tape. However, under some circumstances this can shift the cue point.

Tradisjonell digitalisering



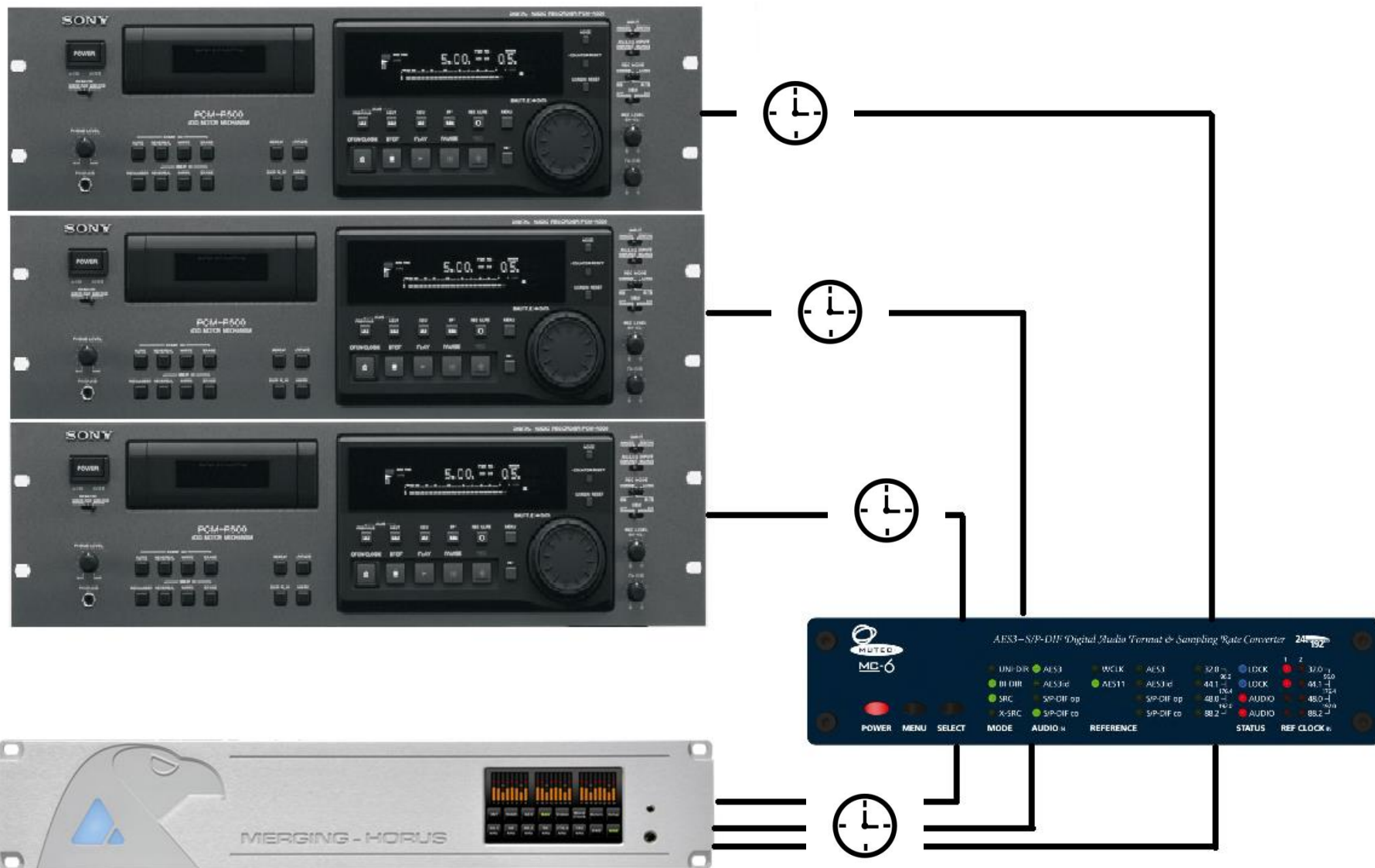
AES/EBU digital



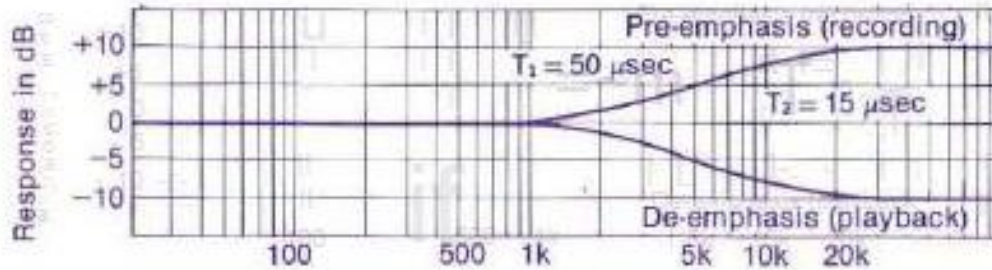
Opptaker mottar sync fra avspiller

- Klokkejitter 
- Klokkedropp 

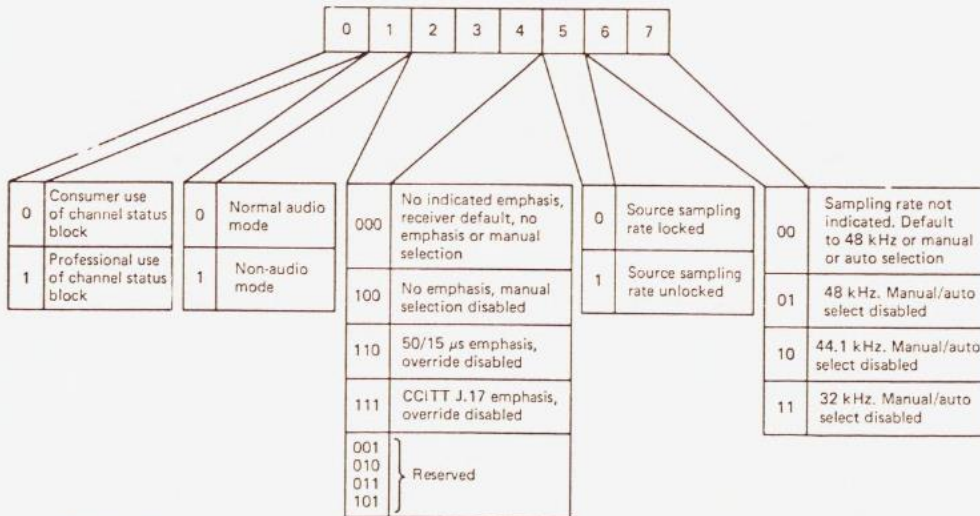
Synkronisere flere avspillere



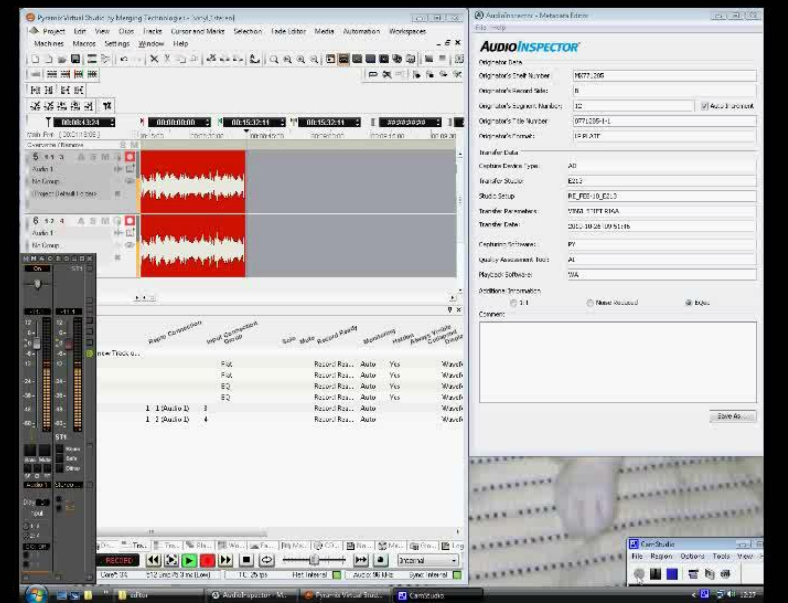
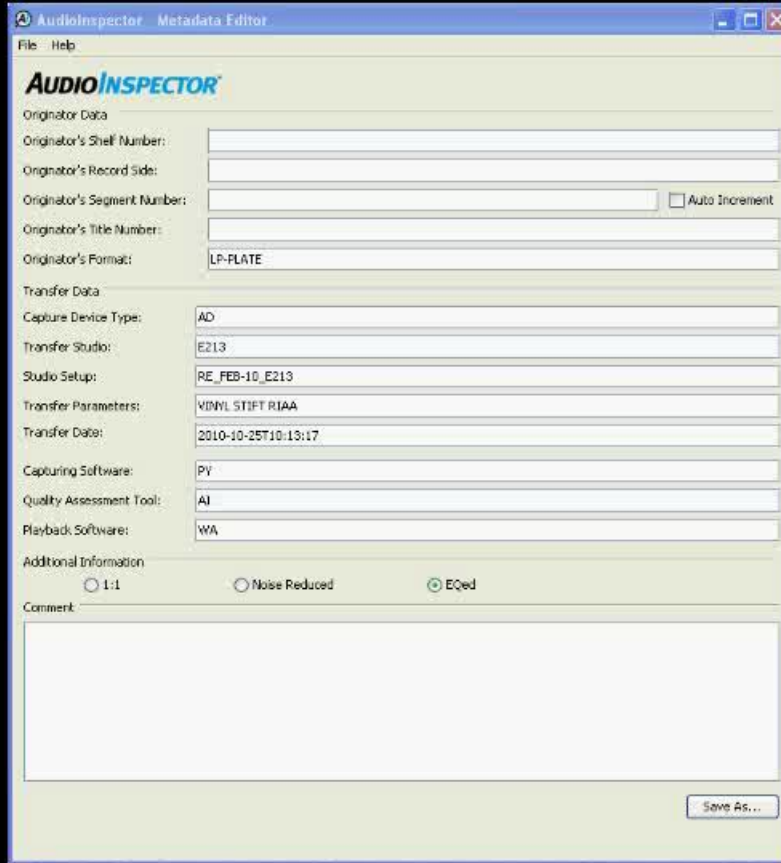
Emphasis

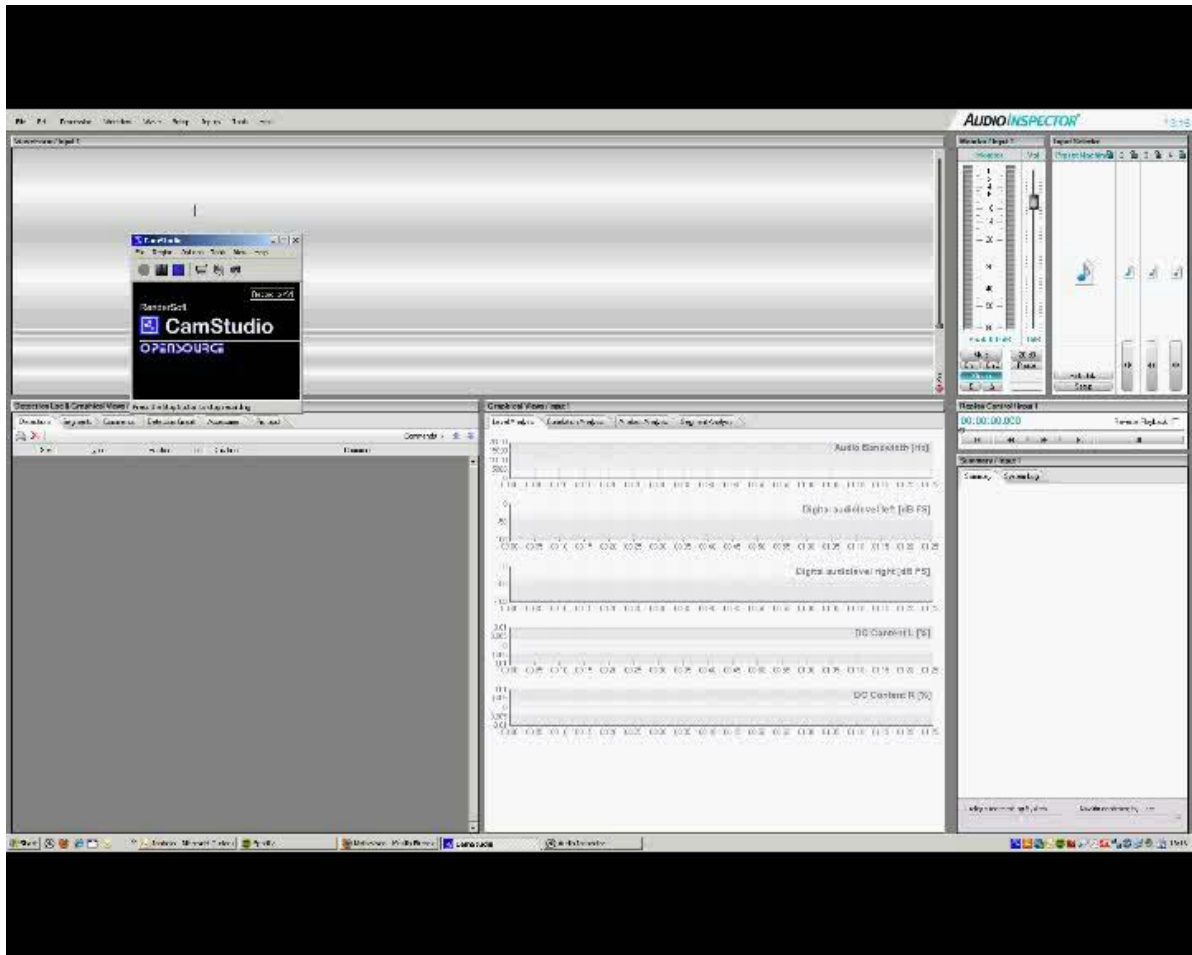


Frequency in Hz
Channel status byte 0

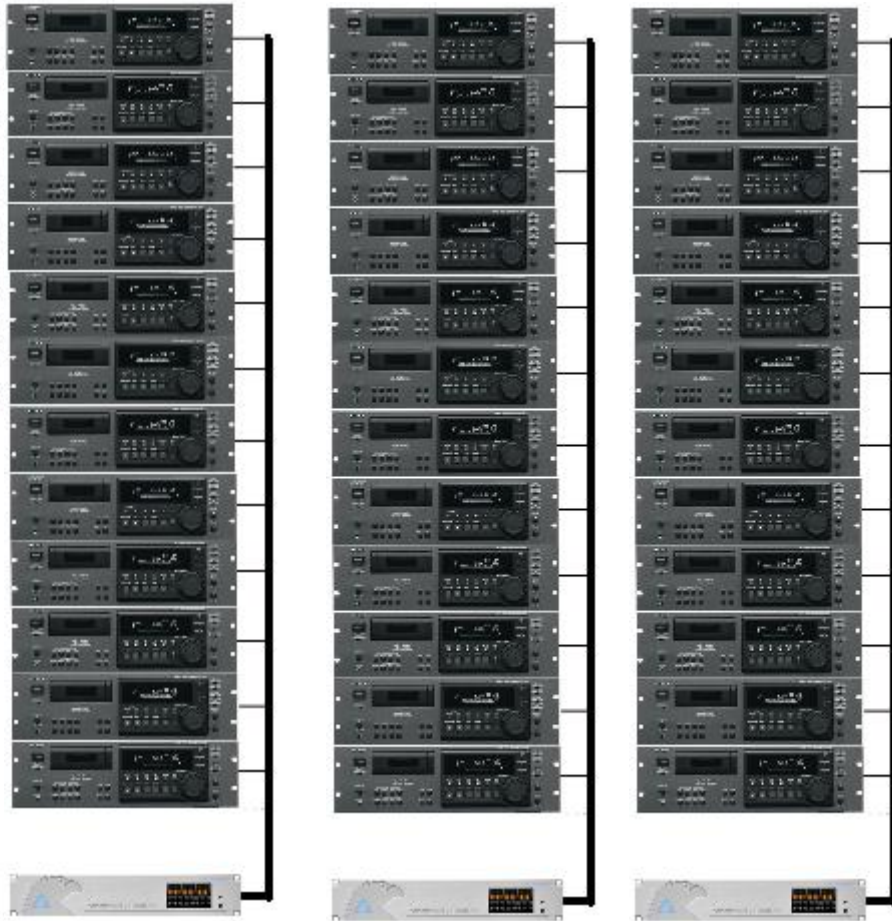


Figur 5.8. Den første byte i kanal statusinformasjonen i AES/EBU-standarden behandler først og fremst betoning og kontroll av samplingsfrekvens.





Storskala digitalisering



Ripping av DAT

